

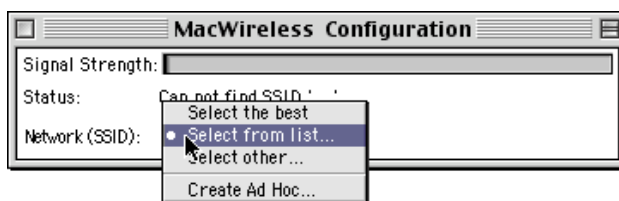


MACINTOSH INSTALLATION INSTRUCTIONS FOR **MacWireless 11b PC Card 100mW**

Installation

The MacWireless PC Card works with Mac OS 7.5.5 through 9.2.2.

1. Locate the installer on the MacWireless CD: PC and PCI Cards > PC and PCI 100 mW > MacWireless_PC_Card_PCI > MacWireless PC Card Installer, or download the software from MacWireless.com: <http://www.macwireless.com/html/support/software.html>
2. Double-click the Installer. Restart when prompted.
3. Insert the MacWireless PC Card into the card slot on your computer.



Configuration

1. Open the MacWireless PC Card Control Panel: go to the Apple menu, then "Control Panels", then choose "MacWireless PC Card".
2. From the Windows menu choose "Configuration...".
3. Select "Network SSID: Select from list", then choose your access point from the list of detected networks and click "Select". "Select the best" automatically scans for available access points and picks the one with the strongest signal level. "Select other..." allows the name of an access point to be typed directly into the Control Panel. "Create Ad Hoc..." allows you to create a direct computer-to-computer network. If you choose the name of an ad hoc network that already exists, you will automatically join the existing network.
4. If your wireless network uses password protection:
 - a. Select "Encryption" from the Windows menu to set your password protection options.
 - b. Choose "Encryption: Disabled" for no password protection, "Encryption: 64-bit" for 40-bit or 64-bit encryption, or choose "Encryption: 128-bit" for 128-bit encryption.
 - c. Enter the proper Password or Hexadecimal Key and click "OK".
5. Open the TCP/IP control panel from the Windows menu. Select the "MacWireless PC Card" from the "Connect via" pop-up menu. Please note that for older Macintoshes you will see "Alternate Ethernet" rather than "MacWireless PC Card". Choose "Configure: Using DHCP", then close the control panel and save your settings.
6. Open the TCP/IP Control Panel.
7. Create a new preset:
 - a. From the File menu choose "Configurations...".
 - b. Click "Duplicate...", then type "MacWireless PC Card", or something equivalent.
 - c. Click "Make Active".
 - d. Choose "Connect via: MacWireless PC Card".
 - e. Choose "Configure: using DHCP". (Note: Here we are configuring to connect to your Access Point, which in most situations will be using DHCP. If you know that your network uses different settings, then use those.)
8. Close the TCP/IP window and choose "Save".

9. For access to AppleTalk printers and for AppleTalk file sharing you need to configure AppleTalk. Open the AppleTalk control panel from the Windows menu. Choose "Connect via: MacWireless PC Card", then close the control panel and save your settings. Please note that for older Macintoshes you will see "Alternate Ethernet" rather than "MacWireless PC Card".

Manual Software Installation Instructions

Should there be a problem with the software installer, you can follow these manual installation instructions:

The installation files are located inside the **Installer Files** folder.

PC Card on PowerBook:

1. Copy "Wireless 3x" to the Control Panels folder inside the System folder and rename it "MacWireless PC Card".
2. Copy "Wireless drv (3.x11)" to the Extensions folder inside the System folder.
3. Copy "Wireless PC Card Enabler11" to the Extensions folder inside the System folder.
4. Restart your computer.

PC Card if normal install results in an error on PowerBooks 190, 5300, and 1400:

This requires use of the ResEdit application, which is not provided.

1. Copy "Wireless 2x" to the Control Panels folder inside the System folder and rename it "MacWireless PC Card".
2. Copy "Wireless PC Card Ext (2.x)" to the Extensions folder inside the System folder.
3. Using the ResEdit application:
 - a. Open "Wireless drv (2.x11)" file.
 - b. Copy .enet0 resource inside DRV (2.x11) resource into DRV resource in your System file (Macintosh HD\System\System\DRV resource\'.enet0')
4. Save & restart your computer.

PCI card:

1. Copy "Wireless 3x" to the Control Panels folder inside the System folder and rename it "MacWireless PC Card".
2. Copy "Wireless PCI Driver" to the Extensions folder inside the System folder.
3. Copy "Wireless PCI Enabler" to the Extensions folder inside the System folder.
4. Restart your computer.

Troubleshooting

Problem: Unable to connect to a third party access point with WEP encryption enabled.

Solution: Open the MacWireless PC Card Control Panel. From the Edit menu, choose "Preferences...". Check the "Open System Authentication" check box.

Problem: With Mac OS 9.2.2, the computer freezes when File Sharing is on and MacWireless PC Card is inserted.

Solution: Turn File Sharing off or use an older version of Mac OS. AppleTalk-over-IP does work and you can access other computers with this protocol by opening the Chooser, clicking on "AppleShare", clicking "Server IP address...", then entering the other computer's IP address. You may be able to enable File Sharing without AppleTalk by checking the "Enable File Sharing clients to connect via TCP/IP" in the File Sharing Control Panel. This requires the extension "ShareWay IP Personal Bgnd" to be installed.