



MACINTOSH INSTALLATION INSTRUCTIONS FOR **MacWireless Antenna** for AirPort Snow Base Stations



Table of Contents	
<i>AirPort Snow Base Station</i>	1
Introduction	1
Installation	1
Troubleshooting	1
<i>AirPort Graphite Base Station</i>	2
Introduction	2
Installation	2
Troubleshooting	2

Introduction

Thank you for purchasing a MacWireless antenna. Install instructions for the snow base station are on this side of the sheet, while install instructions for graphite base stations can be found on the reverse side. Please be sure to choose the correct instructions for your base station. Before installing your antenna, we recommend that you test your current signal level using iStumbler. Compare this result to the signal level after installation to see how much your connection has improved. iStumbler is included on the MacWireless CD in the "Extra Software" directory, and is also available for download at: <http://www.istumbler.net/>

Installation

1. Attach the white MacWireless cable adapter to the MacWireless antenna cable. This will convert the cable to the proper connector type for your base station's antenna port.
2. Using the Torx T-8 driver, take out the 3 screws and remove the bottom shell. Then remove the white plastic port covering. The result will look like the image to the right.
3. Unplug the built-in antenna cable by simply pulling firmly directly away from the receptacle.
4. Pull the MacWireless antenna cable and adapter through the bottom shell opening and plug the connector into the AirPort. Please note that the built-in antenna is a straight connector, while the MacWireless antenna connector is right angle.
5. Put the bottom shell back on, and tighten the 3 Torx screws.
6. Power on your base station and position the antenna for optimal performance.



Note: As an alternative to removing the white plastic port cover entirely, you may drill a hole in this plastic to pass the antenna cable through. We recommend using a 3/8" drill bit.

Troubleshooting

I'm not seeing a significant increase in range. What can I do?

1. Verify the physical connections, and make sure that you power-cycle your wireless device after connecting or disconnecting range extending hardware.
2. Aim the antenna appropriately. For more information on how your antenna radiates energy, see the antenna help section of our website: <http://www.macwireless.com/html/help/antenna.html>

Factors Affecting Range and Performance of All Wireless LAN Systems

Range estimates are typical and require line of sight. Basically that means you will need a clear unobstructed view of the antenna from the remote point in the link. Keep in mind that walls and obstacles will limit your operating range and could even prevent you from establishing a link. Signals generally will not penetrate metal or concrete walls. Trees and leaves are obstructions to 802.11 frequencies so they will partially or entirely block the signal. Other factors that will reduce range and affect coverage area include metal studs in walls, concrete fiberboard walls, aluminum siding, foil-backed insulation in the walls or under the siding, pipes and electrical wiring, furniture, and sources of interference. The primary source of interference in the home will be the microwave oven. Other sources include other wireless equipment, cordless phones, radio transmitters, and other electrical equipment. Due to the increased gain, installing range extender antennas in the presence of interference could actually yield equal or worse range. These solutions work for the vast majority of our customers. However, due to the numerous factors affecting range and performance, we do not guarantee that you will achieve any specific improvement in range for your specific application.

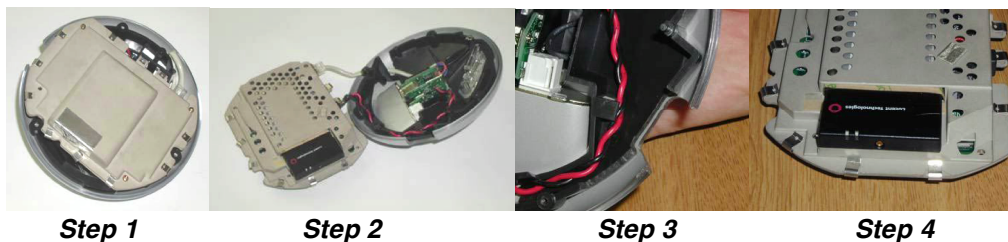


MACINTOSH INSTALLATION INSTRUCTIONS FOR
MacWireless Antenna
For AirPort Graphite Base Station



Introduction

Thank you for purchasing a MacWireless antenna. Install instructions for the graphite base station are on this side of the sheet, while install instructions for snow base stations can be found on the reverse side. Please be sure to choose the correct instructions for your base station. Before installing your antenna, we recommend that you test your current signal level using iStumbler. Compare this result to the signal level after installation to see how much your connection has improved. iStumbler is included on the MacWireless CD in the "Extra Software" directory, and is also available for download at: <http://www.istumbler.net/>



Installation

1. Remove the bottom cover using a Phillips screwdriver
2. Remove the guts of the airport. You will have to disconnect the internal power and 10BaseT connectors.
3. Use a Dremel or other carving tool to carve out a place for your fingers so you can insert and remove the antenna connector.
4. Remove the little black plug over the antenna connector on the end of the Lucent Wavelan PCMCIA card. It is pictured as already removed revealing the female antenna receptacle.
5. Replace the internal parts of the base station and re-attach the cover. With the modification finished, you should have easy access to the antenna port as shown to the right.
6. Attach the provided cable adapter to the antenna cable. This will convert the cable to the proper connector type for your antenna port.
7. Plug the antenna into the external antenna port of the base station.
8. Power on your base station and position the antenna for optimal performance.



Troubleshooting

I'm not seeing a significant increase in range. What can I do?

1. Verify the physical connections, and make sure that you power-cycle your wireless device after connecting or disconnecting range extending hardware.
2. Aim the antenna appropriately. For more information on how your antenna radiates energy, see the antenna help section of our website: <http://www.macwireless.com/html/help/antenna.html>

This modification may void your warranty. MacWireless accepts no responsibility or liability for any modification. Although MacWireless products have been tested and verified, MacWireless does not accept responsibility for loss or damage to any equipment or device. Use at your own risk.